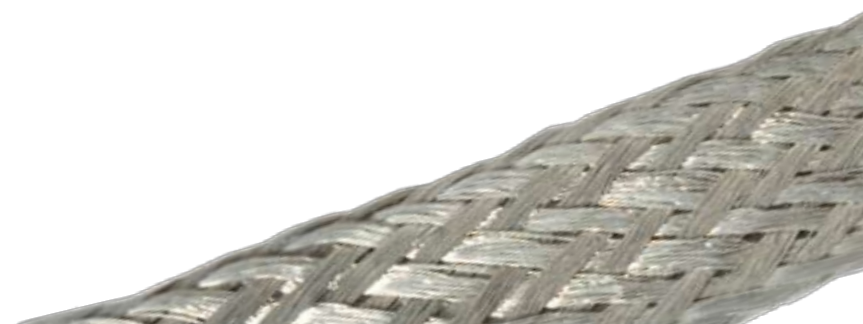




CONTENTS

Solid Busbars	2
Copper Laminated Connectors	2
Flexible Copper Connectors	3
Copper Pressings, Links and Coils	3
Heatsinks, Coolers and Machined Parts	4
Earth Bars	4
Terminals	5
- Standard Duty	6
- Heavy Duty	7
- Extended palm 2 hole fixing lugs	8
- Transformer terminals 4 hole fixing	8
Butt Splices	9
- Standard duty	9
- Heavy duty	9
- Parallel	9
Flag Terminals	10
Telecommunication Terminals	10
Copper Pin Terminals	11
Dissimilar Copper Splices	11
High Voltage Splices	11
Crimp Tooling	12





LML Products Limited was founded in 1968 and is located in Calne, Wiltshire. The company manufactures and sells customised solid busbars, laminated and braided connectors, coils, pressings, links, heat sinks, coolers, machined parts and earth bars. It also manufactures and sells a wide range of copper tube terminals covering standard sizes and specials, crimp tools and dies.

In-house facilities include CNC machining centres, automatic presses, turret press, forming, punching and finishing machinery complemented with our own tooling capability. An electroplating plant offers various plating options including bright tin, nickel and silver.

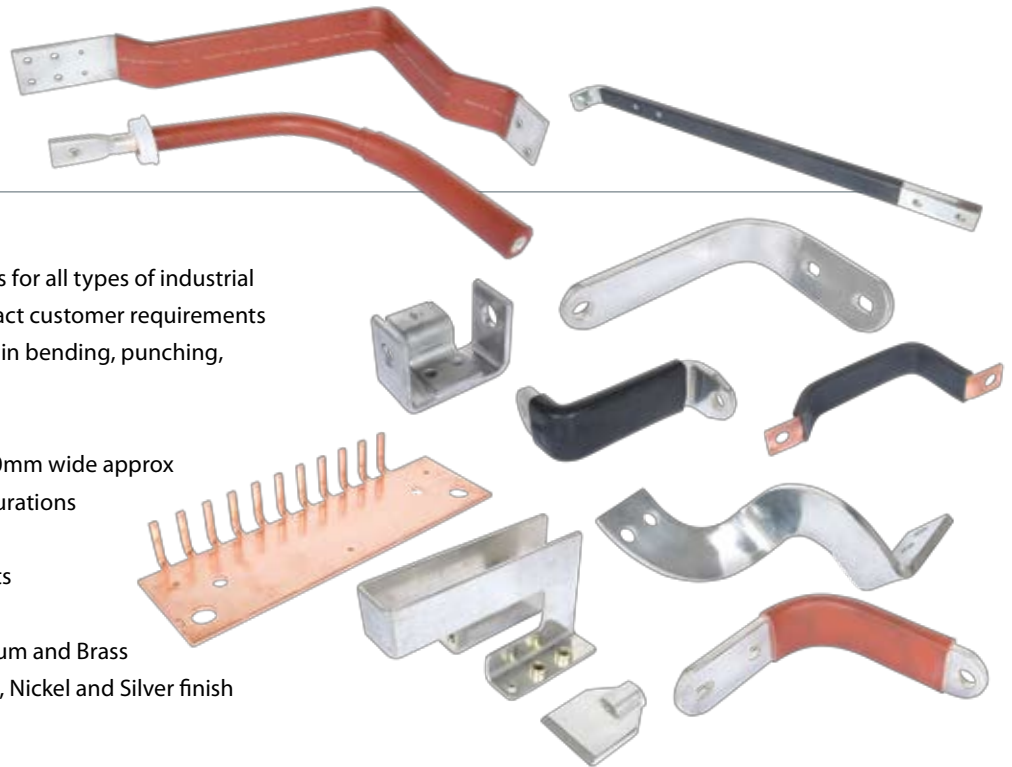
All products are manufactured under BS EN ISO 9001:2000 accreditation.



Solid Busbars

High and low voltage Busbars for all types of industrial applications. Produced to exact customer requirements utilising accurate techniques in bending, punching, brazing and finishing.

- Up to 20mm thick and 200mm wide approx
- Simple or complex configurations
- Rectangular or round
- Range of sleeving products
- Powder coating insulation
- Copper, Cuponal, Aluminium and Brass
- Natural, electro-bright Tin, Nickel and Silver finish



2

Copper Laminated Connectors

Flexible Copper Busbars, that are thinly wound copper sheet, offer an alternative to solid Busbars giving the added advantage of flexibility to overcome alignment and thermal expansion problems. LML can manufacture exactly to customer specification in respect of cross section, shape and end configuration. LML's expertise at design stage is available to assist clients in overcoming space restrictions and thermal consideration issues.

- Complex shapes
- Sleeved option
- Multiple laminations
- Length to suit
- Consolidated soldered ends
- Flat or bridged
- Tin or natural finish



Flexible Copper Connectors

Lead Assemblies

High specification round construction cables with cross sectional areas ranging from 0.5mm² to 1000mm². Natural or tinned finish with numerous end termination alternatives.

Braided Connectors

High specification flat stranded Copper Braid Connectors available in natural or Tinned finish ranging from 4mm² to 1500mm² and up to 3000 amps.

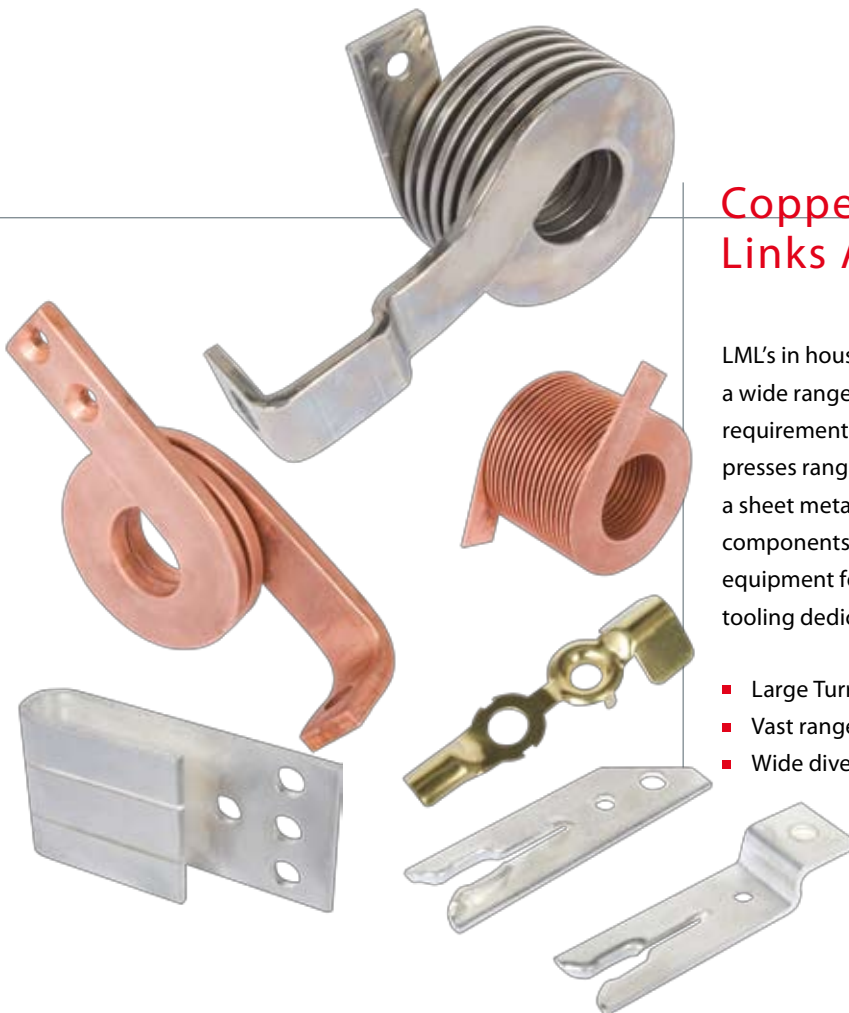
- Integral lug option
- LML Copper Tube Termination available
- Ferruled ends
- Consolidated or loose ends
- Large range of special connectors available
- Multiple crimping opportunities
- No length restrictions
- Large variety of sleeving capabilities



Copper Pressings, Links And Coils

LML's in house manufacturing equipment offers a wide range of products to suit customer requirements. Equipment includes a variety of presses ranging from 1 tonne to 400 tonnes, and a sheet metal Turret Press for up to 4mm thick components. LML has designed and developed equipment for manufacturing blow out coils, including tooling dedicated to customer requirements.

- Large Turret Press bed size
- Vast range of tooling
- Wide diversity of machinery



Heatsinks, Coolers, and Machined Parts

Precisely toleranced water-cooled blocks and heat sinks are essential for the efficient operation of many types of electrical and electronic devices.

LML's investment in CNC machinery facilitates precise control of the manufacturing process of close surface tolerance machined blocks. We manufacture to your designs and specifications but can also offer a wealth of experience and advice which adds value to our service.

- Silver tipped contacts available
- Deep hole drilling
- CAD cam programming
- Large array of tooling
- In house tooling manufacture



Earth bars

LML manufacture earth bars to your requirements using quality components.

This bespoke service is tailored to your needs, any size of copper bar can be sourced, fixing materials changed and channel bases can be redesigned to enable a product to be engineered that meets your requirements exactly.

Standard earths bars are also available.



Terminals

LML terminals are manufactured from seamless copper tube to BS EN 12449 and feature bell mouth entry up to 500mm² and chamfered entry from 500mm² to 1000mm².

All terminals and splices (other than parallel splices) are provided with an inspection hole to ensure the conductor is fully inserted before crimping.

All copper tube terminals are fully annealed to avoid cracking and splitting when crimped.

Internal barrel diameters suit standard cables as defined in BS 6360.

The standard finish is bright electro tin plating to BS 1872. Other finishes can be provided e.g. nickel or silver.

Our terminals are designed, manufactured and independently tested to comply with BS 4579 and are also approved by London Underground. Quality is assured through our independent accreditation to BS EN ISO 9001:2000

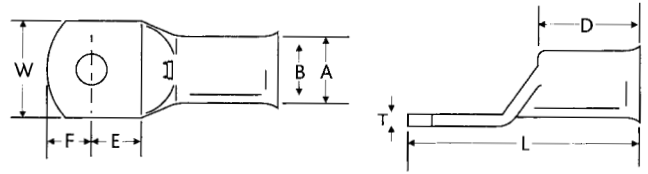


The details on the following pages are intended to provide comprehensive ordering information and dimensional data on our wide range. Specials are our speciality and we welcome all enquiries.

Standard Duty Terminal Lugs - Type NT

Ordering information

The numerical part of the series reference denotes the conductor cross sectional area in mm². Thus to order, for example, a terminal for a 25mm² conductor and an M8 stud size the full ordering reference is CAT25-8NT.



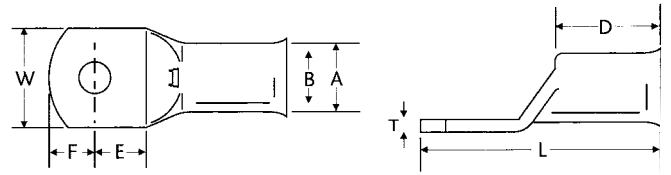
NOMINAL DIMENSIONS mm

CAT REF	STUD SIZE (M)	A	B	W	E	F	D	L	T
CAT10	5-6NT	6.6	4.7	10.8	5.6	5.2	8.0	26.0	1.7
	8NT	6.6	4.7	13.5	8.0	7.0	9.5	29.5	1.2
	10NT	6.9	4.4	16.0	12.0	10.0	10.0	39.0	1.5
	12NT	6.9	4.4	18.0	12.0	10.0	10.0	39.0	1.2
CAT16	6NT	7.5	5.5	10.8	8.8	6.2	9.5	30.0	2.0
	8NT	7.5	5.5	13.5	8.0	7.0	9.5	30.0	1.6
	10NT	7.5	5.5	15.0	10.9	9.6	9.5	35.5	1.5
	12NT	8.0	5.6	18.0	12.0	10.0	11.0	42.0	1.3
CAT25	6NT	9.4	7.0	13.8	8.8	6.2	12.0	32.5	2.4
	8NT	9.4	7.0	13.8	8.0	7.0	12.0	32.5	2.4
	10NT	9.4	7.0	16.0	10.9	9.6	12.0	38.0	2.1
	12NT	9.4	7.0	18.0	10.5	10.0	12.0	38.0	1.9
CAT35	6NT	10.6	8.2	15.3	8.8	6.2	14.0	35.0	2.4
	8NT	10.6	8.2	15.3	8.0	7.0	14.0	35.0	2.4
	10NT	10.6	8.2	15.3	10.9	9.6	14.0	40.5	2.4
	12NT	10.6	8.2	18.0	10.5	10.0	14.0	40.5	2.2
CAT50	6NT	11.9	9.5	17.4	8.8	6.2	14.9	37.0	2.5
	8NT	11.9	9.5	17.4	8.0	7.0	14.9	37.0	2.5
	10NT	11.9	9.5	17.4	10.9	9.6	14.9	42.5	2.5
	12NT	11.9	9.5	17.4	10.5	10.0	14.9	42.5	2.5
CAT70	6NT	14.5	11.5	20.9	8.8	6.2	17.0	40.5	3.0
	8NT	14.5	11.5	20.9	8.0	7.0	17.0	40.5	3.0
	10NT	14.5	11.5	20.9	10.9	9.6	17.0	46.0	3.0
	12NT	14.5	11.5	20.9	10.5	10.0	17.0	46.0	3.0
	14,16NT	14.5	11.5	20.9	13.0	13.0	17.0	50.0	3.0
CAT95	8NT	16.7	13.5	24.3	10.9	9.6	19.0	49.5	3.2
	10NT	16.7	13.5	24.3	10.9	9.6	19.0	49.5	3.2
	12NT	16.7	13.5	24.3	10.5	10.0	19.0	49.5	3.2
	14,16NT	16.7	13.5	24.3	13.0	13.0	19.0	56.0	3.2
CAT120	10NT	19.0	15.0	27.3	14.4	9.6	20.0	55.5	4.0
	12NT	19.0	15.0	27.3	14.0	10.0	20.0	55.5	4.0
	14NT	19.0	15.0	27.3	13.2	10.8	20.0	55.5	4.0
	16NT	19.0	15.0	27.3	13.0	13.0	20.0	60.0	4.0
CAT150	10NT	21.0	16.5	30.2	14.0	10.0	23.0	61.0	4.5
	12NT	21.0	16.5	30.2	14.0	10.0	23.0	61.0	4.5
	14NT	21.0	16.5	30.2	13.2	10.8	23.0	61.0	4.5
	16NT	21.0	16.5	30.2	13.0	13.0	23.0	65.0	4.5
CAT185	10NT	23.0	18.5	33.3	15.5	9.2	29.0	66.5	4.5
	12NT	23.0	18.5	33.3	15.5	9.2	29.0	68.0	4.5
	14NT	23.0	18.5	33.3	15.5	9.2	29.0	68.0	4.5
	16NT	23.0	18.5	33.3	13.0	13.0	29.0	70.0	4.5
CAT240	10,12,14,16,20NT	26.0	21.0	37.7	18.0	17.0	32.0	88.0	5.0
CAT300	10,12,14,16,20NT	28.0	23.0	41.0	18.0	17.0	37.0	97.0	5.0
CAT400	10,12,14,16,20NT	32.0	27.0	47.3	22.0	22.0	38.0	108.0	5.0
CAT500	10,12,14,16,20NT	36.0	30.0	53.0	28.0	24.0	38.0	117.0	6.9

Heavy Duty Terminal Lugs - Type HD

Ordering information

The numerical part of the series reference denotes the conductor cross sectional area in mm². Thus to order, for example, a terminal for a 10mm² conductor and a M12 stud size the full ordering reference is CAT10-12.



NOTE: ■ Series CAT 500 and above have chamfered entry. ■ Series CAT 10 and above can be supplied as Right Angle terminals add suffix B90 ■ The HD range can be supplied without inspection hole making them suitable for soldered joints.

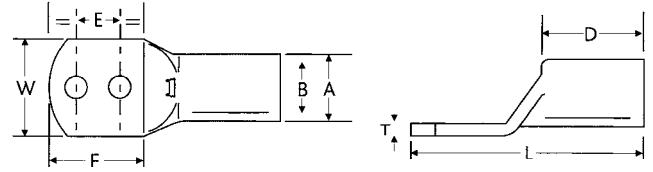
NOMINAL DIMENSIONS mm

CAT REF	STUD SIZE (M)	A	B	W	E	F	D	L	T
CAT1.5	3	3.6	1.9	5.5	5.0	3.0	7.5	17.0	1.4
	4	3.6	1.9	6.7	6.0	4.0	7.5	19.5	1.1
	5	3.6	1.9	7.7	6.5	4.5	7.5	20.4	0.9
CAT2.5	3	3.9	2.4	5.5	5.0	3.0	7.8	18.0	1.6
	4	3.9	2.4	8.0	5.0	4.0	6.0	19.0	1.4
	5	3.9	2.4	10.0	6.2	4.5	6.0	21.2	1.1
CAT4	4	4.7	3.0	10.0	6.0	5.0	8.0	21.0	1.7
	5	4.7	3.0	10.0	7.0	5.5	8.0	22.0	1.4
	6	4.7	3.0	10.0	7.0	6.0	8.0	23.5	1.3
CAT6	4	6.0	4.1	9.5	6.0	4.0	8.5	21.5	2.0
	5	6.0	4.1	10.0	6.4	5.5	8.5	24.5	1.9
	6	6.0	4.1	11.0	6.5	5.5	8.5	24.5	1.7
	8	6.0	4.1	12.5	8.5	7.0	8.5	27.0	1.6
CAT10	10	6.0	4.1	12.5	9.3	7.7	8.5	29.0	0.9
	5,6	6.9	4.4	10.5	5.9	5.1	9.0	27.0	2.0
	8	6.9	4.4	14.0	9.8	8.3	10.0	35.0	1.6
	10	6.9	4.4	16.0	12.0	10.0	10.0	39.0	1.5
CAT16	12	6.9	4.4	18.0	12.0	10.0	10.0	39.0	1.2
	5,6	8.0	5.6	11.0	5.9	5.1	11.0	29.5	2.2
	8	8.0	5.6	14.0	9.8	8.3	11.0	38.0	1.7
	10	8.0	5.6	16.0	12.0	10.0	11.0	42.0	1.5
CAT25	12	8.0	5.6	18.0	12.0	10.0	11.0	42.0	1.3
	5,6,8	9.5	7.0	13.5	9.8	8.3	13.0	40.0	2.4
	10	9.5	7.0	16.0	12.0	10.0	13.0	44.0	2.0
CAT35	12	9.5	7.0	18.0	12.0	10.0	13.0	44.0	1.8
	5,6,8	11.0	8.2	15.5	9.8	8.3	14.0	41.0	2.8
	10	11.0	8.2	15.5	12.0	10.0	14.0	45.0	2.8
	12	11.0	8.2	18.0	12.0	10.0	14.0	45.0	2.2
CAT50	14	11.0	8.2	20.0	15.0	12.0	14.0	50.0	2.0
	5,6,8	12.1	9.5	17.2	9.8	8.3	18.0	46.0	2.4
	10,12	12.1	9.5	17.2	12.0	10.0	18.0	50.0	2.4
	14	12.1	9.5	20.0	15.0	12.0	18.0	55.0	1.9
CAT70	16	12.1	9.5	22.0	15.0	12.0	18.0	55.0	1.7
	5,6,8	15.0	11.5	21.2	9.8	8.3	18.0	48.0	3.5
	10,12	15.0	11.5	21.2	12.0	10.0	18.0	52.0	3.5
CAT95	14,16	15.0	11.5	21.2	16.5	16.5	18.0	63.0	3.5
	8,10,12	17.0	13.5	24.3	12.0	10.0	24.0	58.0	3.5
CAT120	14,16	17.0	13.5	24.3	16.5	16.5	24.0	69.0	3.5
	8,10,12,14,16	19.0	15.0	27.2	16.5	16.5	27.0	73.0	4.0
CAT150	20	19.0	15.0	27.2	18.8	14.3	27.0	73.0	4.0
	8,10,12,14,16	21.0	16.5	30.0	16.5	16.5	27.0	78.0	4.5
CAT185	20	21.0	16.5	30.0	18.8	14.3	27.0	78.0	4.5
	12,14,16	23.0	18.5	33.5	16.5	16.5	30.0	82.0	4.5
CAT240	20	23.0	18.5	33.5	18.8	14.3	30.0	82.0	4.5
	10,12,14,16,20	26.0	21.0	37.7	18.0	17.0	32.0	88.0	5.0
CAT300	10,12,14,16,20	28.0	23.0	41.0	18.0	17.0	37.0	97.0	5.0
	10,12,14,16,20	32.0	27.0	47.3	25.0	25.0	38.0	113.0	5.0
CAT500	ANY	38.1	30.0	55.0	29.0	25.0	44.0	127.0	8.2
	ANY	44.0	33.8	63.0	25.0	23.0	46.0	127.0	10.2
CAT630	ANY	49.0	38.0	70.0	34.0	34.0	56.0	164.0	11.0
	ANY	53.0	42.5	77.0	34.0	34.0	56.0	169.0	10.5

Extended Palm 2 Hole Fixing Lugs - Type POI

Ordering information

The numerical part of the series reference denotes the conductor cross sectional area in mm².



NOMINAL DIMENSIONS mm

CAT REF	STUD SIZE (M)	A	B	W	E	F	D	L	T
CAT70 POI	12.5	15.0	11.5	21.2	45.0	75.0	18.0	105.0	2.0
CAT95 POI	12.5	17.0	13.5	24.3	45.0	75.0	24.0	111.0	3.5
CAT120 POI	12.5	19.0	15.0	27.2	45.0	75.0	27.0	115.0	4.0
CAT150 POI	12.5	21.0	16.5	30.0	45.0	75.0	27.0	120.0	4.5
CAT185 POI	12.5	23.0	18.5	33.5	45.0	75.0	30.0	125.0	4.5
CAT240 POI	12.5	26.0	21.0	37.7	45.0	75.0	32.0	128.0	5.0
CAT300 POI	12.5	28.0	23.0	41.0	45.0	75.0	37.0	137.0	5.0
CAT400 POI	12.5	32.0	27.0	47.3	45.0	75.0	38.0	138.0	5.0
CAT500 POI	12.5	38.0	30.0	55.0	45.0	75.0	50.0	160.0	8.2
CAT630 POI	12.5	44.0	33.8	63.0	45.0	75.0	50.0	164.0	10.2
CAT800 POI	12.5	49.0	38.0	70.0	45.0	75.0	56.0	171.0	11.0

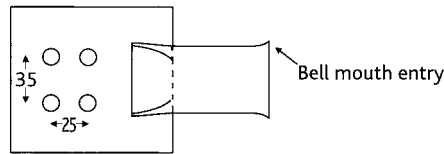
NOTE: The stud size and centres shown are standard. Other sizes and centres can be provided if required.

Transformer Terminals 4 Hole Fixing - Type - 8TF4H

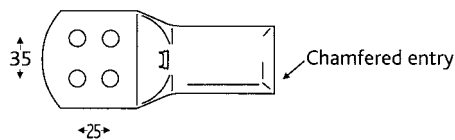
Ordering information

The numerical part of the series reference denotes the conductor cross sectional area in mm².

CAT REF	
CAT70	8TF4H
CAT95	8TF4H
CAT120	8TF4H
CAT150	8TF4H
CAT185	8TF4H
CAT240	8TF4H
CAT300	8TF4H
CAT400	8TF4H
CAT500	8TF4H
CAT630	8TF4H
CAT800	8TF4H
CAT1000	8TF4H



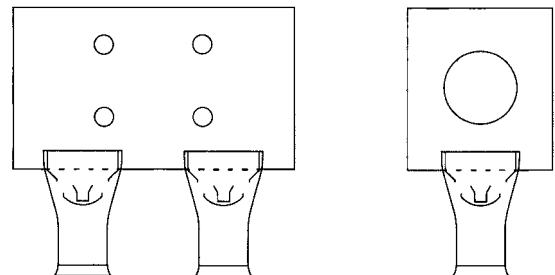
CAT70 to CAT300 are of the brazed palm type with barrel dimensions identical to Type HD heavy duty terminals.



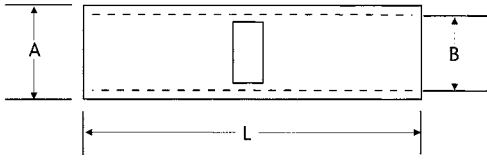
CAT400 to CAT1000 are dimensionally identical to the Type HD heavy duty terminals with the exception of the palm fixing holes.

Brazed Palm Assemblies

Heavy duty terminal barrels brazed onto specially machined fixings of any description. The brazed joint gives low millivolt drop and higher mechanical strength than the copper on either side of the joint. Standard crimping tools can be used to connect the cable to virtually any type of connector minimising fixing time and maximising electrical and mechanical joint performance.



Standard Duty Butt Splices - Type BSNT

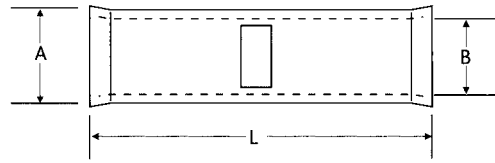


NOMINAL DIMENSIONS mm

CAT REF	A	B	L
CAT10 BSNT	6.6	4.7	25.0
CAT16 BSNT	7.5	5.6	30.0
CAT25 BSNT	9.4	7.0	35.0
CAT35 BSNT	10.6	8.2	40.0
CA50 BSNT	12.0	9.5	44.0
CAT70 BSNT	14.7	11.5	44.0
CAT95 BSNT	16.7	13.5	46.0
CAT120 BSNT	19.0	15.0	50.0
CAT150 BSNT	21.0	16.5	54.0
CAT185 BSNT	23.0	18.5	56.0
CAT240 BSNT	26.0	21.0	58.0
CAT300 BSNT	28.0	23.0	60.0
CAT400 BSNT	32.0	27.0	63.0

NOTE: Standard duty type are straight entry.

Heavy Duty Butt Splices - Type BSHD



Bell mouth entry
1.5 - 400mm²

Chamfer entry
500 - 1000mm²

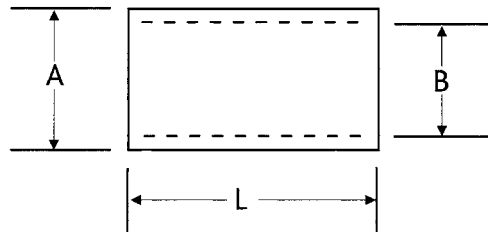
NOMINAL DIMENSIONS mm

CAT REF	A	B	L
CAT1.5 BSHD	3.3	1.8	14.0
CAT2.5 BSHD	4.2	2.3	16.0
CAT4 BSHD	5.0	3.0	19.0
CAT6 BSHD	6.0	4.0	22.0
CAT10 BSHD	6.9	4.4	25.0
CAT16 BSHD	8.0	5.6	30.0
CAT25 BSHD	9.5	7.0	35.0
CAT35 BSHD	11.0	8.2	39.0
CAT50 BSHD	12.1	9.5	44.0
CAT70 BSHD	15.0	11.5	44.0
CAT95 BSHD	17.0	13.5	55.0
CAT120 BSHD	19.0	15.0	63.0
CAT150 BSHD	21.0	16.5	66.0
CAT185 BSHD	23.0	18.5	74.0
CAT240 BSHD	26.0	21.0	80.0
CAT300 BSHD	28.0	23.0	89.0
CAT400 BSHD	32.0	27.0	90.0
CAT500 BSHD	38.1	30.0	135.0
CAT630 BSHD	44.0	33.8	135.0
CAT800 BSHD	49.0	38.0	135.0
CAT1000 BSHD	53.0	42.5	135.0

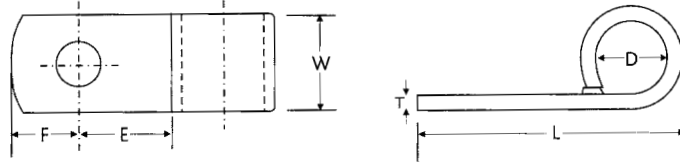
Parallel Butt Splices - Type PS

NOMINAL DIMENSIONS mm

CAT REF	A	B	L
CAT10 PS	6.9	4.4	11.0
CAT16 PS	8.0	5.6	14.0
CAT25 PS	9.5	7.0	16.0
CAT35 PS	11.0	8.2	18.0
CAT50 PS	12.1	9.5	21.0
CAT70 PS	15.0	11.5	21.0
CAT95 PS	17.0	13.5	26.0
CAT120 PS	19.0	15.0	30.0
CAT150 PS	21.0	16.5	32.0
CAT185 PS	23.0	18.5	36.0
CAT240 PS	26.0	21.0	39.0
CAT300 PS	28.0	23.0	43.0
CAT400 PS	32.0	27.0	44.0
CAT500 PS	38.1	30.0	66.0
CAT630 PS	44.0	33.8	66.0
CAT800 PS	49.0	38.0	66.0
CAT1000 PS	53.0	42.5	66.0



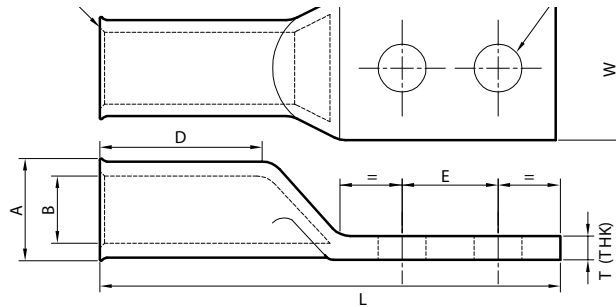
Flag Terminals - Type FT



NOMINAL DIMENSIONS mm

SERIES	CONDUCTOR SIZE (mm ²)	STUD SIZE (M)	L	W	T	F	E	D
FT10	10.0	5,6,8,10,12	27.0	12.7	1.6	7.9	10.7	4.8
FT16	16.0	5,6,8,10,12	28.0	12.7	1.6	7.9	10.7	6.0
FT25	25.0	5,6,8,10,12	31.0	12.7	1.6	7.9	11.0	7.6
FT35	35.0	5,6,8,10,12	32.0	15.9	1.6	7.9	11.9	8.4
FT50	50.0	5,6,8,10,12	33.0	15.9	1.6	7.9	11.9	9.5
FT70	70.0	5,6,8,10,12	44.7	15.9	3.2	12.2	14.2	11.5
FT95	95.0	8,10,12,14	47.8	19.0	3.2	12.2	14.2	14.5
FT120	120.0	10,12,14	50.8	25.4	3.2	12.2	14.2	15.0

Telecommunication Terminals - Type POI



SERIES	H	A	B	W	E	D	L	T	F
CAT 16 POI	6.50	8.00	6.50	12.00	16.00	11.00	52.00	2.20	34.00
CAT 25 POI	10.50	9.50	7.00	13.50	25.00	13.00	66.00	2.00	44.00

Note -
The Stud si
centres sho
standard. O
and centre

Material specification: BSEN 12449 C106 Internal Barrel to Suit Cable Defined in BS6360.

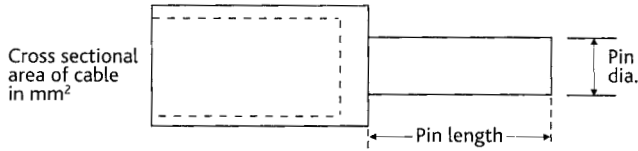
Standard finish: Bright Electro-Tin to BS1872.

NOMINAL DIMENSIONS mm

SERIES	A	B	W	E	D	L	T	F
CAT10 POI	6.9	4.6	11.0	16.0	10.0	50.0	2.0	34.0
CAT16 POI	8.0	5.6	11.0	16.0	11.0	52.0	2.2	34.0
CAT25 POI	9.5	7.0	13.5	16.0	13.0	56.0	2.4	34.0
CAT35 POI	11.0	8.2	15.5	16.0	18.0	57.0	2.8	34.0

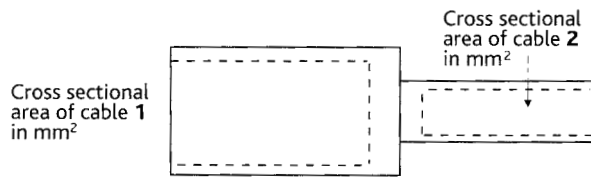
NOTE: The stud size and centres shown are standard. Other sizes and centres can be provided if required.

Copper Pin Terminals



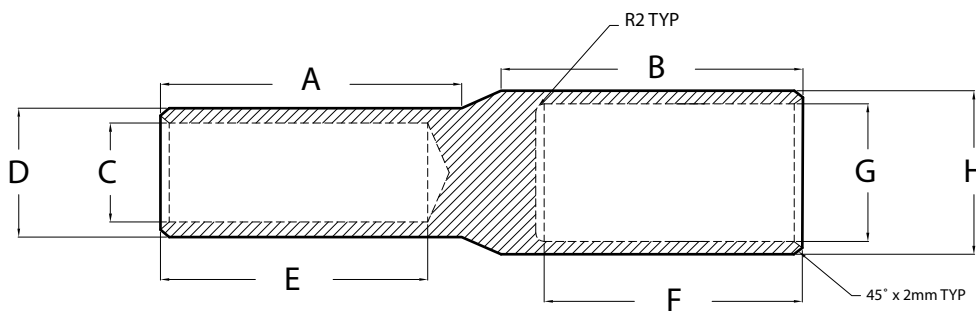
Copper pin terminals are manufactured to order and are available to cater for conductor sizes from 1.5mm² to 1000mm². When ordering specify conductor cross sectional area, pin length and pin diameter required.

Dissimilar Copper Splices



Copper splices for jointing cables of dissimilar cross sectional areas are manufactured to order and are available to cater for conductor sizes from 1.5mm² to 1000mm². When ordering specify the conductor cross sectional area of both conductors.

High Voltage Splices



Butt Splice and Dissimilar Splices up to 36kV available manufactured with Thick Wall Copper Rod and fully annealed to stop any splitting when crimped. Manufactured to customer request.

Hand Hydraulic Crimp Tool Part No. HYD210-400

OUTPUT: 12 tons (130kN)
 WEIGHT: 6.3kg (tool only)
 LENGTH: 636mm
 JAW OPENING: 30mm

- Hand hydraulic crimp tool suitable for copper tube terminals 10 - 400mm²
- For ease of operation and comfort the tool head can be fully rotated through 180°
- The built-in safety valve will by-pass the oil supply when the maximum pressure is reached, and the pressure release system can easily be operated at any stage of compression
- **Optional** - hexagonal dies available to suit copper tube terminals 10mm² to 400mm² (13 sets)
- **Optional** - can be ordered as a complete set (tool & dies) Part No. HYD210-400 COMPLETE

Specification subject to change without notice



12

Crimp Tool - C130-26 ELEC 14.4V

FORCE: 12 tons (130kN)
 WEIGHT: 6.72kg (with battery)
 MOTOR: 14.4V 300W
 BATTERY: 14.4V 2.0Ah Ni-Cd
 (Optional 14.4V 2.6Ah NiMH battery available)
 DIMENSIONS: 395 x 300 x 93mm
 STROKE: 26mm (LxWxH)

- Interchangeable carbon brush
- Speed electrical variator
- Safety valve with audible "click" to prevent over compression
- 360° head rotation
- Linear speed at empty work: 6mm/s
- Hydraulic pressure access for control
- Standard battery with energetic capacity of 28.8 Wh
- Rechargeable within 1 hour
- **Optional** - NiMH battery unit with energetic capacity of 37.4 Wh
- **Optional** - 15min ultrafast charger available
- Battery power load indicator (test battery on the no load part of the stroke)
- Piston retract mechanism actuated by a trigger
- In conformity with: 86/336/CE du 3/05/89.E.M.C EN 50144-1 for safety of electrohand tools with motor



Specification subject to change without notice

